



HERITAGE

**HERITAGE PALACE DECOR**  
INTERIOR DESIGN | FIT-OUT | JOINERY | HPL CUBICLES

[WWW.HPDUA.E.COM](http://WWW.HPDUA.E.COM)



# ANYTHING IS POSSIBLE

## Contents

---

|                              |    |
|------------------------------|----|
| Introduction                 | 05 |
| About our company            | 07 |
| Organization Structure       | 08 |
| Products & Services          | 09 |
| Portfolio                    | 23 |
| Official documents & license | 28 |



## WE ARE PASSIONATE AT WHAT WE DO



At Heritage Palace Decor (HPD), every product we manufacture is of the highest quality. Our factory & warehouse is based in Umm Al Quwain, UAE that uses advanced technology and machineries imported from Italy.

We are fabricating different kinds of High Pressure Laminate (HPL) products and joinery works made of wooden materials which are crafted and molded as per customers' requirements and by made-to-order basis.



During the manufacturing stage, products are carefully checked to eliminate defects because the value the opportunity to provide and guarantee the cutting-edge technology, on-time delivery, and outstanding quality of products and services that we offer.

## Our Values

**Integrity cannot be compromised.** We are honest and consistent in all aspects and our communication is transparent and forthright.

**Customer satisfaction is the cornerstone of our success.** We strive to succeed customer expectations and dedicate time and effort towards quality service to all our clients.

**Committed to innovation.** We consider learning and development to be a continuous process. Consequently, we adapt state of the art technology and practices to enhance efficiency of our operations constantly.

**Safety First. Our employees are our most important asset.** Therefore, safety and their well-being is our primary priority.

**Great team build great companies.** In order to attract, develop and retain the best talent, we have created a conducive environment. Individual growth is the cornerstone of our company's growth.

## Our Mission

Add value at every stage in project management by implementing the practice of delivering excellent interior designs, products and services in accordance with client's requirement and exceed their expectations in quality. Our dynamic approach and commitment is the foundation for our success. Today, our work force comes together as a professional providing high

To attain recognition as the market leader in manufacturing quality products and consistently deliver eco-friendly world class finishes in our interior decoration concepts, execute and complete all projects to create an ambience that will echo the desires of our clients' heart and emerge the preferred choice for all our clients and employees, today and in the future.

## Our Vision



## We have STATE-OF-THE-ART

**With the latest and high technology of machineries that specialized for supply and installation.**

We deliver results in achieving breathtaking concepts that benchmark the high standards and quality of lifestyle.

Consistency and continual improvement of technology to match world standards is a catalyst to our business propositions. We are confident that you will be satisfied with our products and design works, within a budget price, high quality of products and services.



### High Pressure Laminate (HPL) Works

- Toilet Cubicle Partition
- Integrated Plumbing System
- Urinal Partition
- Locker
- Bench

### Joinery Works

- Kitchen Cabinet
- Wardrobe
- Vanity Counter
- Fire Rated / Non-Fire Wooden Door
- Fire Rated Steel Door
- Parquet Flooring
- Skirting
- Wall Cladding

### Interior Design & Fit Out

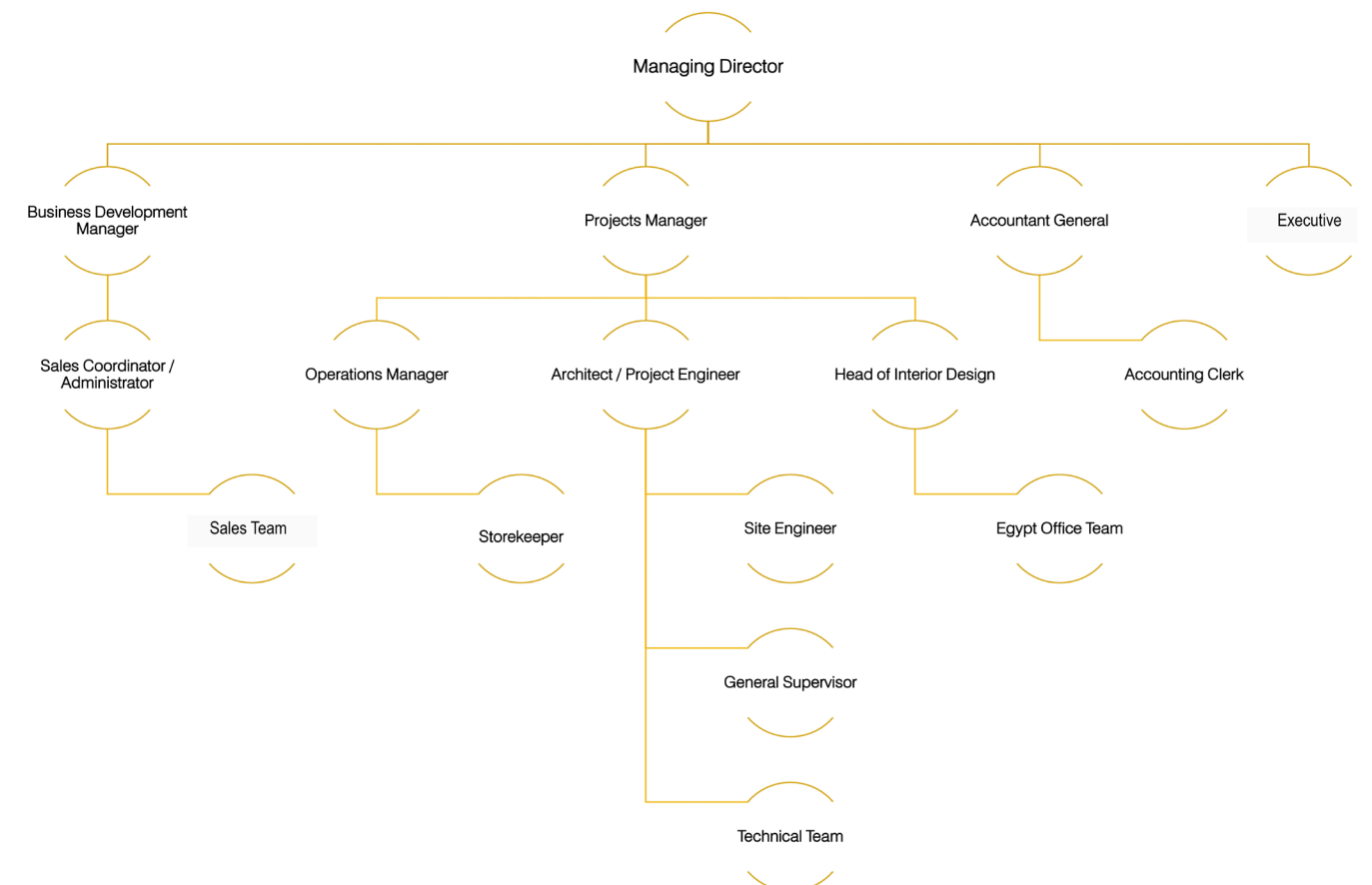
- Interior Design
- Interior Design Execution
- Gypsum Works
- Painting Works
- Marble Works



**Tarek Elshehawy**  
Managing Director

An MBA holder who took the degree at Oxford University in United Kingdom. He is results-driven, self-motivated and resourceful Managing Director with a proven ability to develop and strengthen management team in order to maximize company efficiency.

Experienced in leading and growing the sectors of business to make it a dynamic and progressive organization that identifies and capitalizes on emerging business ventures to propel an organization to the top tier of its industry. Portrays motivational management style with a proven history of building, guiding and retaining high-performance teams to develop and implement strategies for accelerated growth. Strives to optimize operations and improve service quality while strengthening the bottom line.





## Interior Design & Fit-Out

Heritage Palace Decor has the right expertise to decorate all kinds of buildings, houses, villas, palaces, commercial centers and government premises with high standard precision and layout.



We are specialized in “Floor and Wall” finishing with marble, stone, and granite. As we use the most advanced fixing technology, we add more value to each site whether it is a swimming pool, prestigious palace, five star hotels, pharmacy, medical center or a commercial center.

- Designing and executing high quality works of gypsum, plaster paints and drawing.
- Designing and executing ornamental drawing with Islamic and Italian character.
- Undertaking all works of gliding, marbleizing, antiques, and old touch wood at the hands of professional experts all paint artworks.



We apply oriental architecture to preserve Arabic and Islamic artistic heritage while using the most advanced western technology in designing. We undertake internal finishing works with the same degree of efficiency as we believe that the customer satisfaction is first and foremost.





## TOILET CUBICLE DOORS & PARTITIONS

Heritage Palace Decor's Toilet Cubicle Partition is made of High Pressure Laminate (HPL). It is impressively strong, damage resistant and has remarkable structural stability with double-sided decorative laminate for application particularly suited to use in high humidity and high impact areas.



### Solid Application

Heritage Palace Decor Toilet Cubicle Partition is rich array of solid laminates available in elegant solid, versatile abstracts and genuine wood patterns. It adds value and uniqueness with decors that can blend well with contemporary lifestyles in various set up.

### Advantage

- Exceptional self-supporting properties
- Greater dimensional stability and flatness
- Resistance to abrasion, water and fire
- Excellent hygiene properties
- Resistance to harmful chemicals and organic solvents
- Simple and quick assembly without the need for edging and adhesive, emits low amount of harmful gasses and fumes

## INTEGRATED PLUMBING SYSTEM (IPS)

Heritage Palace Decor offers Integrated Plumbing System (IPS) for all environments to suit all of your site requirements. Our IPS unit is the most cost-effective solution. It is the first made-to-measure pre-plumbed cubicle format in UAE.

We designed our IPS to offer maximum flexibility in both wet and dry environments and to be installed in just a few steps, reducing the need for specialist on-site skills. We give an ideal standard flexibility to choose industry leading products to complement your washroom.

### Features

- The first integrated plumbing system to feature click-fix assembly onto galvanized steel frame
- Flexible & cost-effective solution which works well in all commercial sectors.
- Unique cold rolled ultra-steel frame
- Unique click-fix mechanism for quick and easy assembly, and factory-fitted sanitary ware.
- Ultimate color flexibility
- Increased product longevity
- Factory-tested guaranteed quality



## URINAL PARTITIONS

Men's urinal partition is well defined with 13mm thick High Pressure Laminate (HPL) panels designed with the highest consideration of client's requirements. This panel provides complete privacy along with maintaining hygiene, safety and healthy atmosphere.

It is attractive, strong, durable, easy to maintain and provides unlimited design flexibility as one can choose from a wide range of designs, colors and sizes.

### Product Features

HPL Urinal Partition panel has the capability to maintain its cleanliness feature, simply attractive as well as strong and durable to hold up the urinal in between a easy to maintain mounting configuration and are offered in various shapes with an aesthetic view.

In addition to the strength and serviceability of the HPL Urinal panel, there is also a wide range of colors and it provides almost unlimited design flexibility.

**Standard Height:** 900mm

**Standard Width:** 450mm



# LOCKER

High Pressure Laminate (HPL) Locker is ultimate in locker design and construction. It does not rust nor disintegrate unlike steel, wood and plastic lockers. The HPL construction is combined with state-of-the-art design that gives you an extensive range of customized design and sizes for your individual storage needs. It is waterproof, highly vandal-resistant, elegant and versatile in performance.

## Product Features:

- Door, Side, Top, Bottom: 13mm HPL
- Back Panel: 6mm MDF
- Shall be constructed with 4 aluminum interlock supporting framework making it strong and rigid.
- Concealed hinges shall be Stainless Steel Grade 304 with steel numbering plate or engraved number plate

## Locker Type:



Z Design



Normal Design: 1 Tier



Normal Design: 2 Tiers

### Standard Size:

- Door Width: 300mm
- Door Depth: 400mm
- Door Height: 1800mm
- Total Height: 1900mm

### Standard Size:

- Door Width: 300mm
- Door Depth: 400mm
- Door Height: 1800mm
- Total Height: 1900mm

### Standard Size:

- Door Width: 300mm
- Door Depth: 400mm
- Door Height: 900mm
- Total Height: 1900mm



Normal Design: 3 Tiers



Normal Design: 4 Tiers



Normal Design: 5 Tiers

### Standard Size:

- Door Width: 300mm
- Door Depth: 400mm
- Door Height: 600mm
- Total Height: 1900mm

### Standard Size:

- Door Width: 300mm
- Door Depth: 400mm
- Door Height: 450mm
- Total Height: 1900mm

### Standard Size:

- Door Width: 300mm
- Door Depth: 400mm
- Door Height: 360mm
- Total Height: 1900mm

# BENCHES

High Pressure Laminate (HPL) bench solution comprises a range of sturdy frame options which can be cleverly configured in different ways to maximize the space available.



Having a variety of benches to complement the range of fixtures and fittings for changing rooms & public areas which are manufactured with High Pressure Laminated waterproof plank or slat formats, each with smooth edges and available in a wider range of sporting colors.

## Product Features

Benches in standard sizes and with the option of manufacturing in any size on request by the customer. These benches are made of 13mm thick High Pressure Laminate (HPL) and each standard frame is fabricated in strong mild steel section and painted with powder coated finish making them suitable for use in wet or dry changing rooms.



## KITCHEN CABINET

HPD Kitchen Cabinet strives to create a unique environment. The concept presented by HPD is a continuum between the kitchen unique environment and surrounding space that becomes the protagonist and harmoniously combines with the living area, showing its functional and technological heart.

HPD goes beyond conventions and brings into the kitchen never-before-used materials, covering doors and top with top quality of materials.

Excellence, elegance, and product timelessness are fundamental values which have always characterized and distinguished HPD. HPD gives a value of shape to an outstanding product in terms of quality and aesthetics.



### Heritage Palace Decor offers different types of Kitchen Cabinet

- HPL Kitchen Cabinet
- Aluminum Kitchen Cabinet
- MDF Kitchen Cabinet
  - Melamine Lamination
  - PVC Lamination
  - Formica Lamination
  - Veneer Finish
  - Painted Finish



## WARDROBES

Heritage Palace Decor fabricates and manufactures wardrobe in variety of choices with structure of rust resistance and corrosion resistance at finest quality in all shapes, sizes, colors and can customized the designs as per the client requirements.



### Product Features:

Our wardrobes are best to protect your home from humidity, dust, noise, cold and insects. These doors are elegantly designed with scratch resistance. They have a perfect dimension - accuracy therefore you can fix in easily and perfectly. The doors are finely polished with smooth edges. They are moreover of highest strength giving more durability. You can easily clean the doors and they are termite proof.



### Wardrobe can be made of HPL or MDF material with below choices of finish

- Melamine Lamination
- PVC Lamination
- Formica Lamination
- Veneer Finish
- Painted Finish



## WALL CLADDING

A widerangeofwoodbasedmanufacturedproducts,knownassheetorpanelproducts,are suitable for internal wall or ceiling paneling is made of MDF.

Internal paneling timber products are generally grouped as either solid timber paneling or sheet engineered wood products.



Wall cladding is a natural product that is selected for its color, surface texture and grain. It is available in a number of profiles, with general thickness of 18mm.

## PARQUET FLOORING & SKIRTING

Parquetflooringisthebestandlongestlastingsolutionfordifferenttypesofobjects.In additiontohomes,it isusedinotherpublicbuildings,schools,sportshallsbecausewood isnotonlyanaturalmaterialbutalsohasgoodmechanicalandinsulationpropertiesanda numberofotherpropertiesthatspacerequires,suchascolorandnaturalappearance.



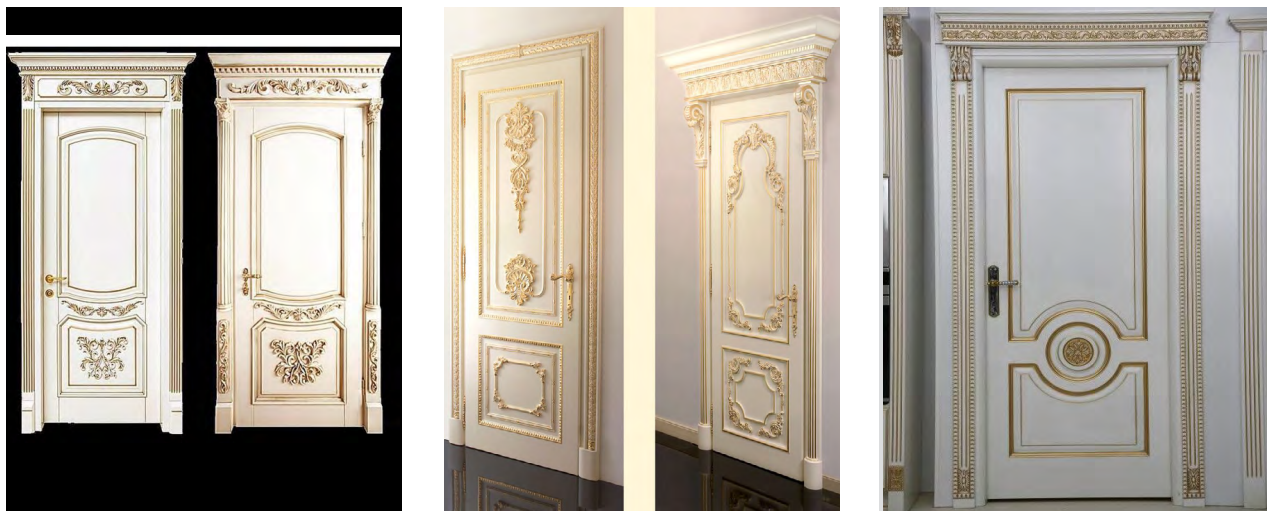
### Product Features

It has several characteristics, such as processing and method of preparation, type of wood from which it is made and class it belongs to. Depending on the type of wood from which it is built, we can distinguish native species of parquet flooring (European) and exotic parquet flooring.

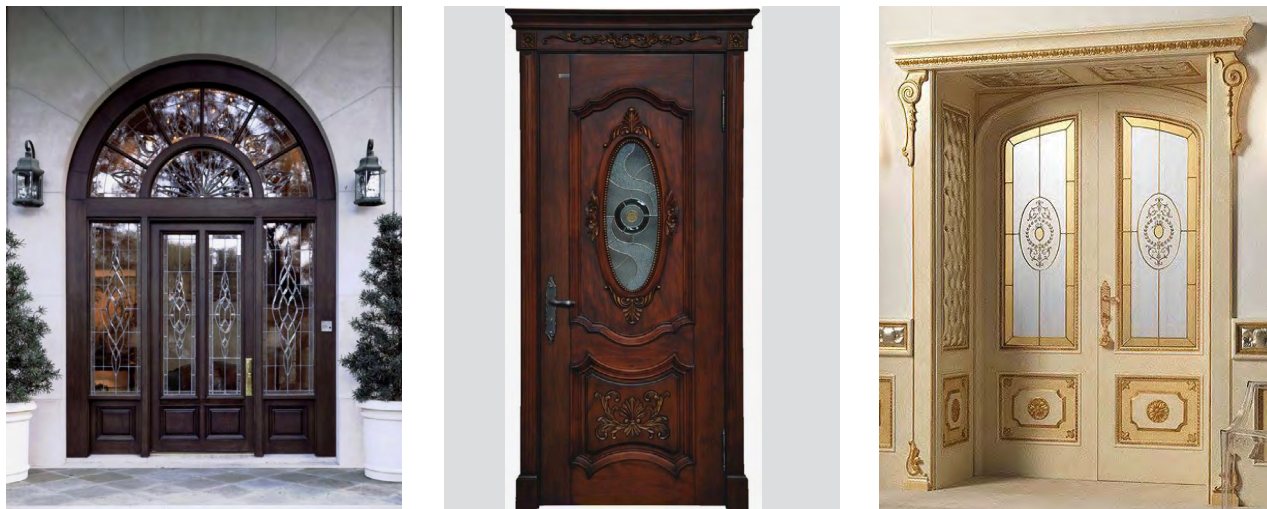


## WOODEN DOOR

Non-Fire Rated Wooden Door is integrated with your overall interior style and enhances the beauty of your surroundings. We provide extraordinary craftsmanship and design while utilizing finest woods in the construction of exceptional high quality custom doors. The material ranges from solid wood with natural veneer lamination and lacquer paint finish or PVC lamination as well as unfinished surface.



Our Fire Rated Wooden Doors act as a barrier to the passage of smoke and fire to varying degrees depending upon its location in a building and the fire hazard associated with the building. The fire rated doors are recommended for use in a wider range of residential and light commercial applications, especially suitable for use in residential complexes, hospitals, schools, data centers, server rooms, safe rooms, etc.

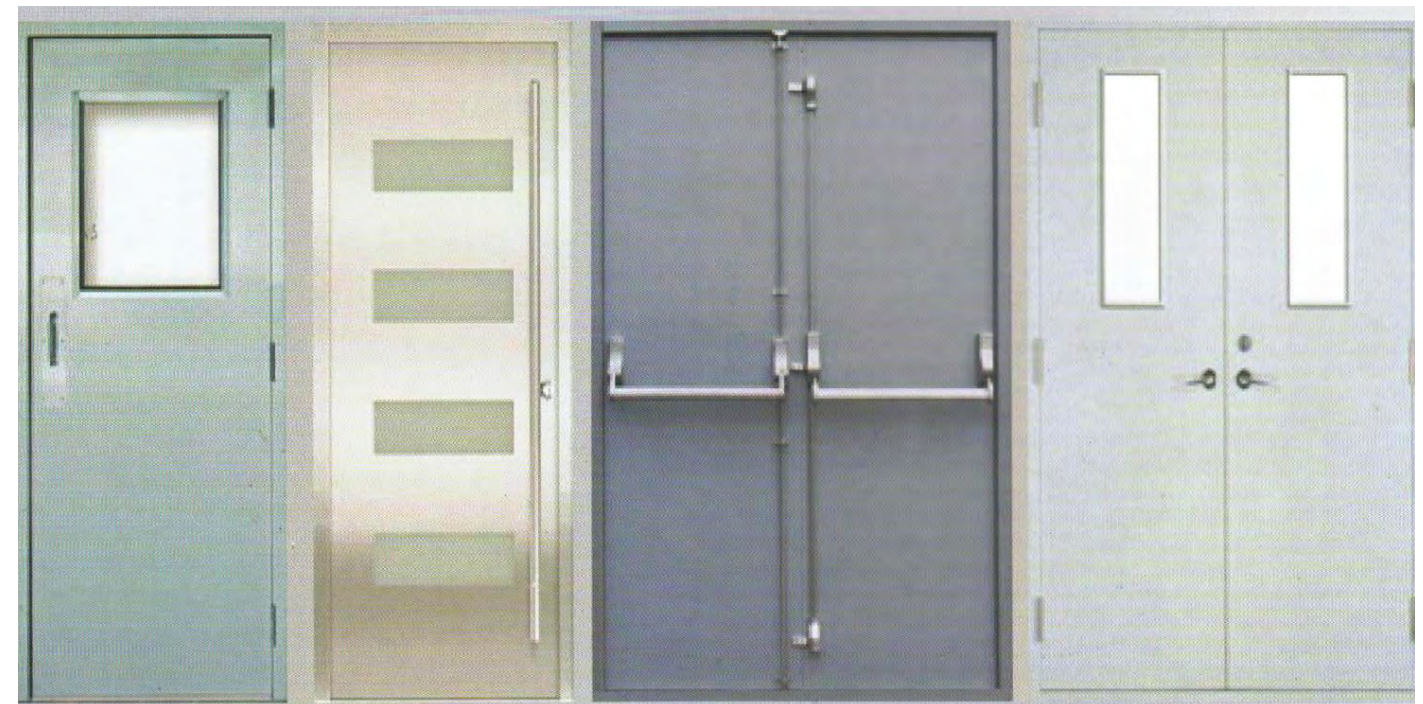


These Fire Rated wooden doors are tested in accordance with BS476 and UL10C and control the spread of fire and smoke from 60 minutes, 90 minutes or 120 minutes.

## FIRE RATED STEEL DOOR

Fire Rated Steel Doors are designed to meet the architectural requirements for full flush doors. This premium door construction combines the strength and dimensional stability of steel with the structural integrity of the honeycomb core. The continuous bonding of the core to metal provides an attractive flat door, free of face welding marks. It has been proven that this type of door has integral high resistance to impact damage and low thermal conductivity.

To meet application, specification and performance requirements, the Flush Door Series offers a wider range of specifiable options including sizes, vision glass designs and hardware preparations.



### Product Features

We offer the following standard unique features which enhance long term performance and durability.

- Honeycomb core system enhances the structural integrity of the door while significantly reducing the weight.
- Full height, epoxy field mechanical interlock edges provide structural support and stability.
- 1.2mm top and bottom channels provide stability and protection for the top and bottom edges from abuse.
- Beveled hinge and lock edges allow for tighter installation tolerances, ensure easier operation, and eliminate binding and sticking.



WE **BUILD**  
YOUR DREAMS





PROJECT PHOTOS



DAMAC PROPERTIES



DUBAI MUNICIPALITY



AL AIN STADIUM



BARAKAH NUCLEAR  
POWER PLANT

ABU DHABI



KHARTOUM INT'L  
AIRPORT

SUDAN



LABOUR  
CCOMODATION

JEBAL ALI - DUBAI



AL KUWAIT HOSPITAL

SHARJAH



IBN BATTUTA MALL

DUBAI



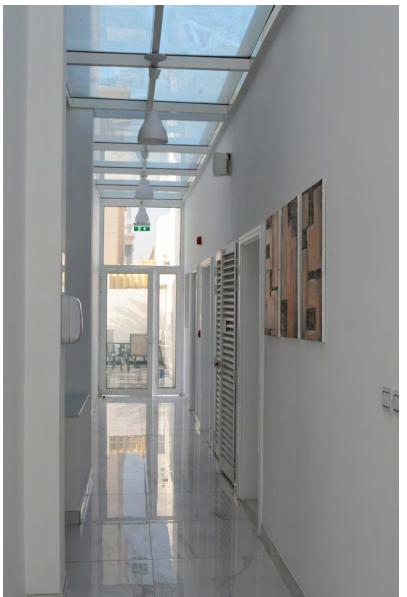
AL ZAHRAA HOSPITAL

DUBAI



VIA  
MEDICAL CENTER

**Location:** Jumeirah, Dubai.  
**Area:** 5500 sqft.  
**works:** Interior desgin and execution.

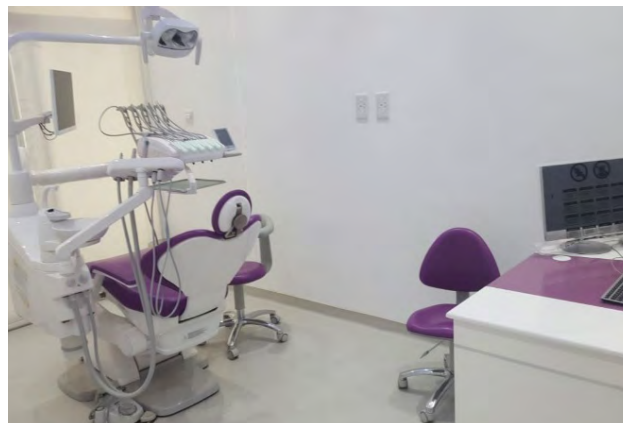
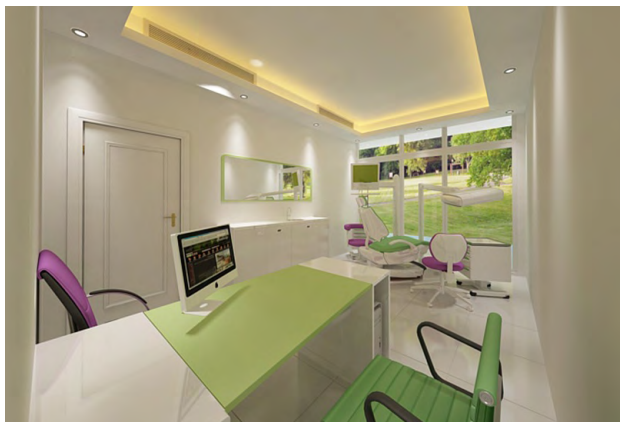






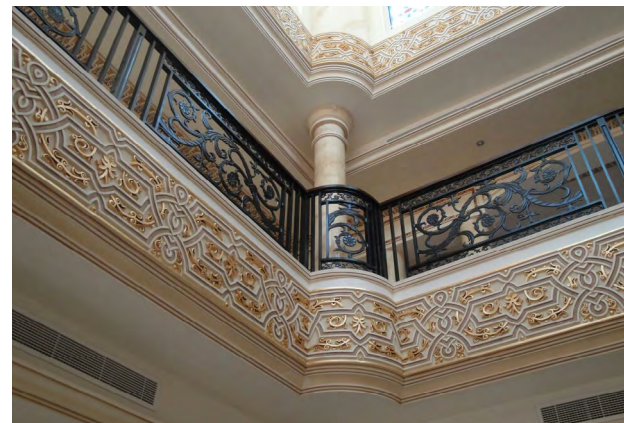
## GREEN LIFE MEDICAL CENTER

**Location:** Jumeirah, Dubai.  
**Area:** 4200 sqft.  
**works:** Interior design and execution.



## PRIVATE VILLA

**Location:** Al Khawaneej, Dubai.  
**Area:** 9000 sqft.  
**works:** Interior design and execution.





# Documents & License

## رخصة تجارية Commercial License

تفاصيل الرخصة / License Details

|                     |                               |                  |
|---------------------|-------------------------------|------------------|
| رقم الرخصة          | 702266                        | License No.      |
| اسم الشركة          | هيريتيج بالاس للديكور ش.ذ.م.م | Company Name     |
| الاسم التجاري       | هيريتيج بالاس للديكور ش.ذ.م.م | Trade Name       |
| الشكل القانوني      | ذات مسؤولية محدودة            | Legal Type       |
| تاريخ الإصدار       | 21/01/2014                    | Issue Date       |
| رقم الرخصة الأم     | 702266                        | Main License No. |
| عضوية الغرفة        | 228905                        | DCC1 No.         |
| تاريخ الانتهاء      | 20/01/2019                    | Expiry Date      |
| رقم التسجيل التجاري | 1129038                       | Register No.     |
| الرقم العلمي        | 0                             | D&B D-U-N-S ® N  |

الأطراف / License Members

| رقم الشخص / No. | الاسم / Name                  | الجنسية / Nationality | الصفة / Role   | الحصص / Share |
|-----------------|-------------------------------|-----------------------|----------------|---------------|
| 369488          | عبد الرحمن عبد الرحمن فهد / a | مصر / Egypt           | مدير / Manager |               |

أنشطة الرخصة التجارية / License Activities

|                               |   |
|-------------------------------|---|
| أعمال تنفيذ التصميم الداخلي   | Interior Decoration                       |
| أعمال الأصباغ والدهانات       | Painting Contracting                      |
| تجارة الأصباغ واللمعات        | Paint & Varnish Trading                   |
| تجارة مواد الديكور والتواضع   | Decoration Materials & Partitions Trading |
| أعمال النجارة وتركيب الأرضيات | Carpentry & Flooring Contracting          |

العنوان / Address

|  |         |           |
|--|---------|-----------|
| صندوق بريد   | 96212   | P.O. Box  |
| رقم القطعة   | 346-505 | Parcel ID |
| مكتب رقم 2708 ملك عبدالمحسن عبدالرحمن عبدالعزيز الشبان - بر دبي - الفليج التجاري |         |           |

ملاحظات / Remarks

تم نقل الموقع بتاريخ 2017/04/30

رقم الإصال / Receipt No. تاريخ الطباعة / Print Date 13/06/2018 12:57

|  |                 |
|--|-----------------|
| الجهات التي لها صلاحية متابعة أنشطة الرخصة | Activity Owners |
|--|-----------------|

يمكنك الآن تجديد رخصتك التجارية من خلال الرسائل النصية القصيرة: أرسل رقم الرخصة إلى 6969 (دو/إتيسال) للحصول على إذن الدفع.

Now you can renew your trade license by sending a text message (SMS). Send your trade license number to 6969 (Du/ Etisalat) to receive payment voucher.

وثيقة إلكترونية معتمدة وصادرة بدون توقيع من دائرة التنمية الاقتصادية. لمراجعة صحة البيانات الواردة في الرخصة يرجى زيارة الموقع [www.dubaided.gov.ae](http://www.dubaided.gov.ae)  
Approved electronic document issued without signature by the Department of Economic Development. To verify the license kindly visit [www.dubaided.gov.ae](http://www.dubaided.gov.ae)



GOVERNMENT OF SHARJAH  
Economic Development Department



حكومة الشارقة  
دائرة التنمية الاقتصادية

استثمر في الشارقة  
invest in Sharjah

رخصة تجارية  
Trading License



#### تفاصيل الرخصة License Details

|                |                                   |                  |               |            |             |
|----------------|-----------------------------------|------------------|---------------|------------|-------------|
| رقم الرخصة     | 607321                            | License No.      | تاريخ الإصدار | 2010/05/26 | Issue Date  |
| رقم السجل      | 58207                             | Registration No. | تاريخ الإنهاء | 2019/05/25 | Expiry Date |
| الاسم التجاري  | قصر التراث لمقاولات الديكور ذ م م |                  |               |            |             |
| الشكل القانوني | شركة ذات مسؤولية محدودة           |                  |               |            |             |
| Trade Name     | HERITAGE PALACE DECOR CONT.L L C  |                  |               |            |             |
| Legal status   | Limited Liability Company         |                  |               |            |             |

#### أطراف الرخصة License Members

| رقم المستثمر | اسم المستثمر                       | الجنسية     | رقم الهوية / الجواز | الصفة | الحصص  |
|--------------|------------------------------------|-------------|---------------------|-------|--------|
| Investor No. | Investor Name                      | Nationality | ID/Passport No.     | Type  | Shares |
| 114837       | خالد جمعه سالم بوسماح              | الإمارات    | 352626              | شريك  | %51    |
| 95027        | طارق أبو العنين عبدالرحمن الشهراوي | مصر         | A05572939           | شريك  | %25    |
| 62430        | محمود حمدي سالم قاسم               | مصر         | 784198651035473     | شريك  | %24    |

المدير طارق أبو العنين عبدالرحمن الشهراوي، محمود حمدي سالم قاسم

أنشطة الرخصة مقاولات فئة سداسية ديكور

العنوان الشارقة-الغوير/الشارقة- خلف شارع الزهراء -مكتب رقم 1548 طابق رقم 15 ملك داماس للعقارات ذ م م

رقم الهاتف المتحرك: 0551000445

صندوق البريد: 27262 الشارقة

#### ملاحظات Notes

- إضافة شريك / شركاء / إسهاب شريك / شركاء

|               |            |
|---------------|------------|
| تاريخ الطباعة | 2018/05/23 |
| رقم المستلم   | 42577      |

- This document is official. It doesn't need to be stamped or signed.  
To view license details please visit SEDD web site: [www.sedd.ae](http://www.sedd.ae)  
- Distribution of flyers is strictly prohibited in public and residential areas. Distribution is allowed through.

- هذه الوثيقة رسمية ولا تحتاج لخطم أو توقيع.  
للكل من صحة البيانات يرجى زيارة موقع الدائرة: [www.sedd.ae](http://www.sedd.ae)  
- يمنع عمداً توزيع الإعلانات في الأماكن العامة والأحياء السكنية. التوزيع فقط من طريق المصطف. المجلات وصناديق البريد.

GOVERNMENT OF UMM AL QUWAIN  
DEPARTMENT OF ECONOMIC DEVELOPMENT



حكومة أم القيوين  
دائرة التنمية الاقتصادية

رخصة مهنية

Professional license

|                     |  |                   |
|---------------------|--|-------------------|
| رقم الرخصة :        | 8050   | license number :  |
| رقم السجل التجاري : | 11271  | Registration No : |
| الاسم التجاري :     | قصر التراث لمقاولات الديكور ذ.م.م (فرع أم القيوين) |                   |

Trade Name : HERITAGE PALACE DECOR CONT L.L.C - UAQ BRANCH

الشكل القانوني : ذات مسؤولية محدودة Legal form : Limited liability

نشاط الرخصة Activity license

Décor Works (أعمال تنفيذ التصميم الداخلي ( الديكور

المدير المسؤول : طارق أبو العنين عبدالرحمن الشهراوي

Manager Tarek Abouelenein Abdelrahman Elshehawy

الجنسية : مصر Nationality : Egypt

تاريخ الإصدار الأول : 11/03/2015 Establishment date

تاريخ انتهاء الترخيص : 10/03/2019 Expiration date

سددت الرسوم بإيصال رقم : 0000180022276580 Fees Payable Receipt No

تاريخ إيصال الدفع : 20/03/2018 Date of payment

ملاحظات : Notes :

تم حذف موقع ملك / ماجد محمد سعيد عيسى المليحي بتاريخ 2016/3/14 من الترخيص  
تم تنازل السيد / سلطان جمعه سالم بوسماح ال علي الى السيد / خالد جمعه سالم بوسماح ال علي و ادخاله كشريك . بتاريخ 2018/3/11

|   |   |
|---|---|
| العنوان : الصناعية الجديدة شارع : الاتحاد | Address Street :                        |
| مالك العقار : احمد حسن علي المنصوري       | Property : Ahmed Hassan Ali Al Mansouri |
| 27262                                     | 0551000445                              |
| info@hpduae.com                           |   |



مدير عام الدائرة

رئيس قسم الرخص

This Document is Considered As Commercial Register .

تعتبر هذه الرخصة بمثابة سجل تجاري .

T: 06 765 2200 F: 06 765 3322 P.O.Box: 1333 Umm Al Quwain - UAE W: <http://ded.uaq.ae>





# Certificate Of Registration

Awarded to

## HERITAGE PALACE DÉCOR CONT. L.L.C

at

P.O.BOX NO: 27262, OFFICE NO.C 1548, DAMAS TOWER, NEAR G.P.O R/A, SHARJAH  
GHUWAIR AREA, SHARJAH, UAE

Quality Registrar Systems certify that the management system of the above organization has been audited and found to be in compliance with the QRS requirements for registration of the management system standard detailed below:

### ISO 9001:2015

Quality Management Systems  
Scope of work

#### MANUFACTURING & INSTALLATION OF :

- HIGH PRESSURE LAMINATE (HPL) WORK
  - TOILET CUBICLE PARTITION, INTEGRATED PLUMBING SYSTEM (IPS), URINAL PARTITION, LOCKER, BENCH
- JOINERY WORK
  - KITCHEN CABINET, WARDROBE, VANITY COUNTER, FIRE RATED & NON-FIRE RATED WOODEN DOOR, FIRE RATED STEEL DOOR, PARQUET FLOORING, SKIRTING, WALL CLADDING
  - CLADDING & SKIRTING & PARQUET FLOORING
- INTERIOR DESIGN & FIT-OUT WORK
  - INTERIOR DESIGN, INTERIOR DESIGN EXECUTION, GYPSUM WORK, PAINTING WORK, MARBLE WORK

Certificate No: AQU-10378

Originally Registered: 30 APR 2013

Latest Issue: 05 MAY 2018

Valid up-to: 29 APR 2019



Quality Registrar Systems

**MANAGING OFFICE ADDRESS:**  
Quality Registrar Systems  
P.O. Box :26826  
United Arab Emirates



Tel: +971-2-6714302  
Fax: +971-2-6741449  
www.qrsyst.com

WORLD WIDE CERTIFICATION

This is an accredited certificate authorized for issue by Accreditation Service for Certifying Bodies (Europe) Limited who have assessed QRS as a Certifying Body for compliance with ISO 17021:2015 'Conformity Assessment - Requirements for bodies providing audit and certification of management systems.

This certificate is only valid when confirmed by the register listed in the quality registrar system ( qrsyst.com)

|   |   |
|---|---|
|   |   |
| <b>شهادة تسجيل مقاول باطن - أعمال الديكور</b>   |   |
| رقم التسجيل / Registration No<br>133700_4<br>قسم التراث لمقاولات الديكور ذ م م<br>الامارة / Address<br>(06) 563-5484<br>الهاتف / Phone<br>27262<br>ص ب / PO.Box<br>(06) 563-5486<br>الفاكس / Fax<br>لأعمال الديكور في حدود (200,000 درهم) لمشاريع الوزارة<br>التوصية / Recommendation | تاريخ الاصدار / Issue Date<br>11/07/2017<br>تاريخ الانتهاء / Expiry Date<br>10/07/2018<br>رقم الايصال / Receipt No<br>170049770350<br>تاريخ الايصال / ReceiptDate<br>15/07/2017 |
| ملاحظة: - هذه الشهادة صادرة من وزارة تطوير البنية التحتية ولا تحتاج إلى توقيع أو ختم رسمي.<br>- تسري صلاحية الشهادة طوال فترة سريان الرخصة التجارية.  |   |





# HERITAGE



Dubai +971 4 242 8591  
Sharjah +971 6 563 5484  
Cairo +20 2 20758081



Dubai +971 4 242 8592  
Sharjah +971 6 563 5486



P.O. Box 96212 Dubai, UAE  
P.O. Box 27262 Sharjah, UAE



info@hpduae.com  
sales@hpduae.com



www.hpduae.com



@HeritagePalaceDecor